

iSyncWave™

Wireless Dry EEG measurement and QEEG-guided neuromodulation device

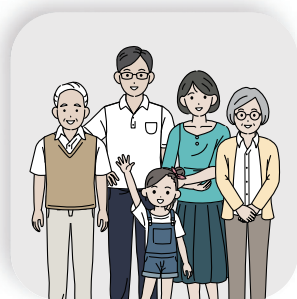


Quick & Easy EEG



Appreciated by both clients and clinicians

Flexible fit for all



Comfortable for all head size

Clinical signal quality



All the precision, compared to wet standard

HRV measurement



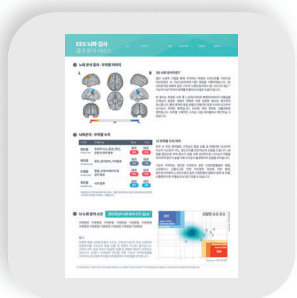
Integrated stress and heart health assessments

Measure and analyze in 10 min.



Seamless standardized analysis via the cloud

AI-driven analysis & summaries



Unique health snapshot: 3D QEEG Brain Mapping, Heart & emotions

Telecare-ready for remote service provision

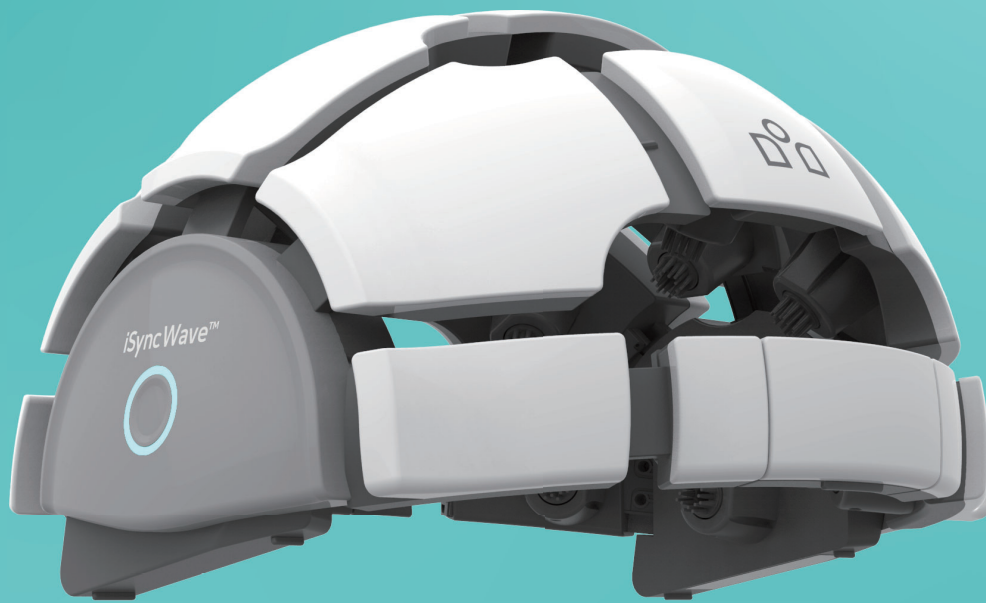


Pre & Post intervention monitoring via client-friendly dry EEG monitoring

World's first integrated EEG-LED therapy solution



QEEG-guided location and frequency protocols for optimum therapeutic response



iSyncWave™

Advanced Dry EEG / NIR-LED Headset
wireless EEG and QEEG guided neuromodulation solution



Ag/AgCl 19 channel
EEG with
Integrated LEDs



AI Automated
Analysis



Quick
Summary Reports